

# MAXVIEW



## Home TV & Radio Reception Products





# MAXVIEW

LEADING MANUFACTURER OF TV  
& RADIO PRODUCTS FOR AROUND  
THE HOME. MADE IN THE UK.  
DISTRIBUTED WORLDWIDE.

## Contents

### Outdoor TV Aerials

- 5 High Gain TV Aerials
- 6 TV Aerials
- 7 TV Aerial Kits

### Indoor TV Aerials

- 8 Contour Plus Indoor TV Aerial
- 8 Contour Indoor TV Aerial
- 9 Truvision Indoor TV Aerial
- 9 Loop Indoor TV Aerial

### Aerial Fixing Kits & Masts

- 10 Wall Fixing Kits
- 10 Chimney Fixing Kit
- 11 Aerial Fixing Kits
- 11 Loft Fixing Kits
- 11 Aerial Masts

### Signal Boosters

- 12 High Gain Signal Boosters
- 13 Plug-In Signal Boosters
- 13 Distribution Signal Boosters

### Connectivity Accessories

- 14 Flexible Flyleads - F to F & Coax to Coax
- 15 HDMI to HDMI Cables
- 15 HDMI Angled Adaptors
- 16 Coax to Coax Fyleads - Premium
- 16 Coax to Coax Fyleads
- 16 Coax to Coax Angled Fylead
- 17 F to F Fyleads
- 17 TV/Radio Cable Kits
- 18 Angled Connectors
- 18 TV & Radio 'Y' Splitters
- 19 Plugs, Connectors, Sockets & Adaptors
- 20 TV Aerial Outlet Plates & Boxes

### TV Wall Mounts

- 21 Range Overview

### Contact Details

- 22 Sales & Support



## WHY CHOOSE MAXVIEW

We pride ourselves on our unparalleled service to anyone looking for TV reception products for around the home. We are proud of our history & are one of the few companies who still manufacture our products here in Britain.



### OUR PRODUCTS

Maxview have been manufacturing equipment & accessories for over 50 years with one aim 'to make receiving TV & Radio around the home as simple as it can be'.

That's why we only manufacture & distribute products that we have designed, tested & approved to our very strict standards.

All products come with 1 year guarantee as standard.



### PACKAGING

Our products come packaged in bespoke designed blister packs & full colour display cartons. Our retail packaging highlights the products use & unique features & includes detailed, easy to follow installation instructions.

All packaging comes with euro hooks, making these easy to fit to most peg boards & display stands.



### MERCHANDISING SUPPORT

We are able to support you with planogram layouts tailor made to suit your requirements.

Please contact your Maxview representative for further details.



### AFTERCARE

When a Maxview product is purchased, we don't want the customer's journey to end there.

Maxview care passionately about our products & want our customers to enjoy them too. We pride ourselves on our friendly UK based customer services team to offer unequalled support through the product lifecycle.



---

# TV AERIALS, AERIAL FIXING KITS & MASTS

---

Our comprehensive range of directional TV aerials, fixing kits & mast cover all signal areas & mounting options, offering outstanding performance & ease of installation for the home.





# MXR0012 & MXR0025 - High Gain TV Aerials



## Product Summary

Our comprehensive range of directional TV aerials cover all signal areas, offering outstanding performance and ease of installation for the home.

## Key Features

<b>Mast Clamp</b> Includes universal clamp to fit most masts.	<b>Centre Mount (MXR0025 only)</b> Provides extra support to the aerial centre, maximising stability between the aerial and mast.	<b>Direct Dipole Connection</b> Simple cable connection into dipole.
--	--	---

## Additional Features

- MXR0012 & MXR0025 are perfect for weak signal areas
- Receives all available digital terrestrial TV signals
- Designed and tested for indoor and outdoor use
- Can be mounted externally or in a loft space
- High quality, durable and robust construction
- Designed and manufactured in the UK

## Specifications

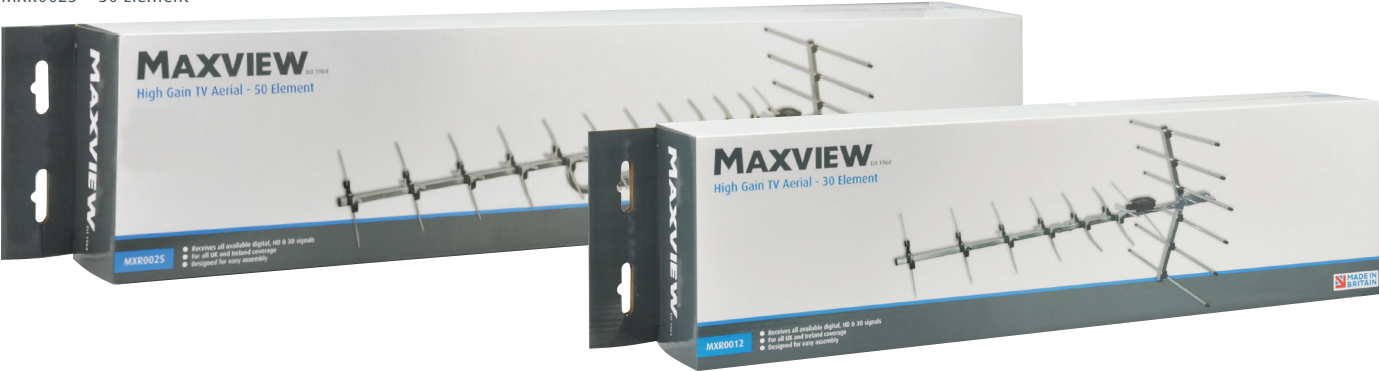
Frequency Range:	Wideband for UHF TV	Elements:	30	50
Compatibility:	SD, HD, 3D and 4K TV	Signal Strength Area:	Weak	Weak
Boom Specification:	15mm Aluminium	Forward Gain:	11dB	13dB
Mast Clamp Compatibility:	Up to 2" Diameter	Front to Back Ratio:	>24dB	>22dB
		Acceptance Angle:	±21°	±18°
		Mount Position:	Rear	Centre
		Aerial Length:	92cm	146cm

## Product Contents

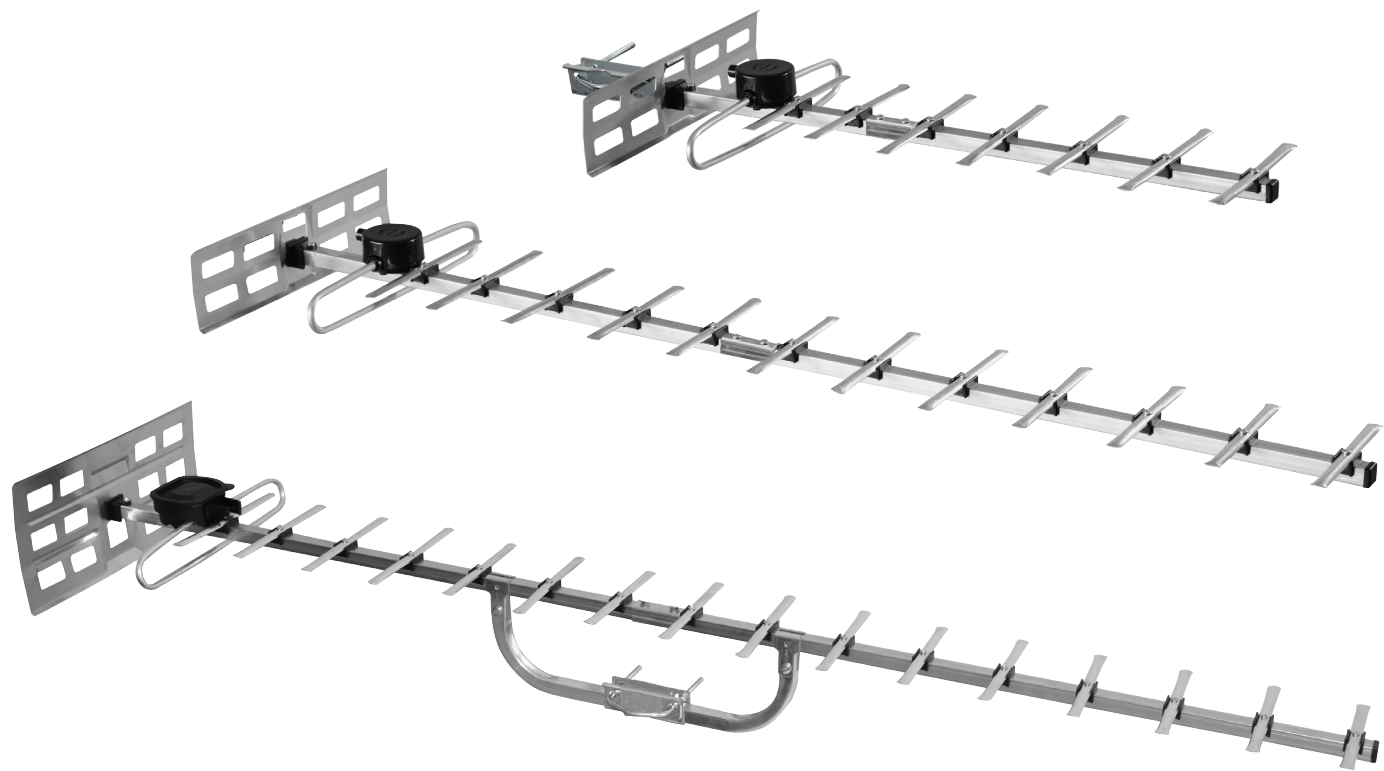
- Directional Aerial
- Mast Clamp
- Centre Mount (MXR0025 only)
- Instructions

## Product Variants

- MXR0012 30 Element
- MXR0025 50 Element







Product Summary

Our comprehensive range of directional TV aerials cover all signal areas, offering outstanding performance and ease of installation for the home.

Key Features

<b>Mast Clamp</b> Includes universal clamp to fit most masts.	<b>Centre Mount (MXR0024 only)</b> Provides extra support to the aerial centre, maximising stability between the aerial and mast.	<b>Direct Dipole Connection</b> Simple cable connection into dipole.
--	--	---

Additional Features

- Receives all available digital terrestrial TV signals
- High quality, durable and robust construction
- Designed and tested for indoor and outdoor use
- Can be mounted externally or in a loft space
- Designed and manufactured in the UK

Specifications

Frequency Range:	Wideband for UHF TV	Elements:	10	14	18
Compatibility:	SD, HD, 3D and 4K TV	Forward Gain:	6dB	7.9dB	8.9dB
Boom Specification:	15mm Aluminium	Signal Strength Area:	Strong	Medium	Weak
Mast Clamp Compatibility:	Up to 2" Diameter	Front to Back Ratio:	>20dB	>20dB	>21dB
		Acceptance Angle:	±29°	±19°	±16°
		Mount Position:	Rear	Rear	Centre
		Aerial Length:	94cm	108cm	130cm

Product Contents

- Directional Aerial
- Mast Clamp
- Centre Mount (MXR0024 only)
- Instructions

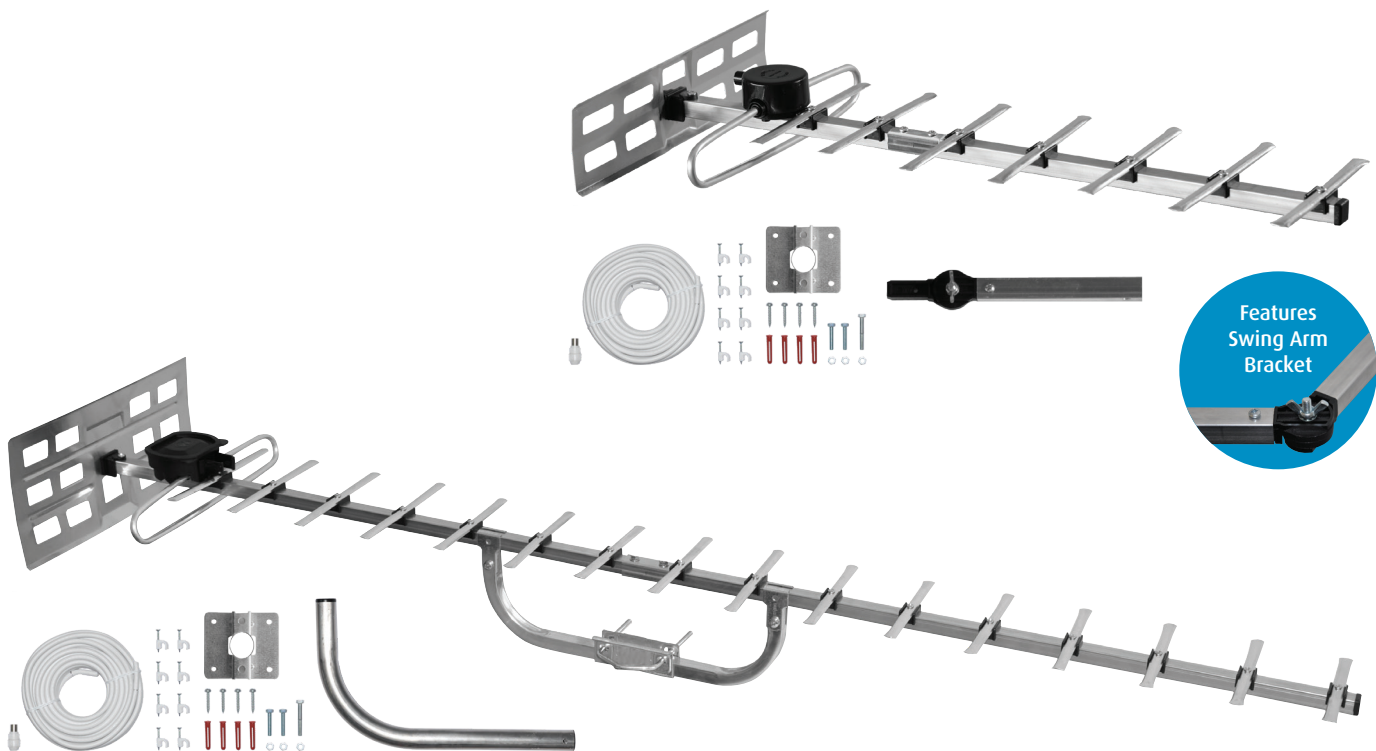
Product Variants

- MXR0010 10 Element
- MXR0034 14 Element
- MXR0024 18 Element





MXR0010/KIT & MXR0024/KIT - TV Aerial Kits



Product Summary

Complete with everything you need to mount the aerial and route to the TV.

Key Features

<b>Mast Clamp</b> Includes universal clamp to fit most masts.	<b>Centre Mount (MXR0024 only)</b> Provides extra support to the aerial centre, maximising stability between the aerial and mast.	<b>Direct Dipole Connection</b> Simple cable connection into dipole.	<b>Swing Arm Bracket (MXR0010/KIT only)</b> Offers wall mounting and adjustment for easy alignment.
--	--	---	--

Additional Features

- Receives all available digital terrestrial TV signals
- High quality, durable and robust construction
- Designed and tested for indoor and outdoor use
- Can be mounted externally or in a loft space
- Designed and manufactured in the UK

Specifications

Frequency Range:	Wideband for UHF TV	Elements:	10	18
Compatibility:	SD, HD, 3D and 4K TV	Forward Gain:	6dB	8.9dB
Boom Specification:	15mm Aluminium	Signal Strength Area:	Strong	Weak
Mast Clamp Compatibility:	Up to 2" Diameter	Front to Back Ratio:	>20dB	>21dB
		Acceptance Angle:	±29°	±16°
		Mount Position:	Rear	Centre
		Aerial Length:	94cm	130cm

Kit Contents

- Directional Aerial
- Mast Clamp
- Centre Mount (MXR0024/KIT only)
- Cranked Mast (MXR0024/KIT only) and Fixing Bracket
- 10m Coaxial Cable
- Cable Clips
- Coaxial Connector
- Instructions

Product Variants

- MXR0010/KIT 10 Element
- MXR0024/KIT 18 Element





## C3006 - Contour Plus Indoor TV Aerial



### Product Summary

Indoor directional TV aerial offering slimline benefits with the additional functionality of a built in signal booster.

### Key Features

#### Integrated Signal Booster

Improves the signal quality of all incoming signals.

#### Slimline Design

Occupies minimal space with a depth of just 45mm.

#### Flexible Mounting Options

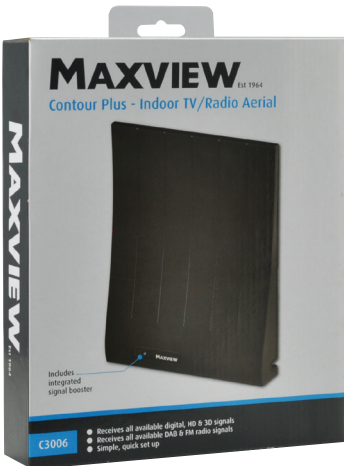
Can be free standing or flush wall mounted with 2m cable offering further flexibility in mounting position.

### Features

- Receives all available digital terrestrial TV signals
- High quality, durable and robust construction
- Unique design
- Designed in the UK

### Specifications

Application: For home and mobile touring applications  
Frequency Range: Wideband for UHF TV  
Compatibility: SD, HD, 3D and 4K TV  
Cable: 2m coaxial  
Power: 2 x AA batteries (not included)



## C3005 - Contour Indoor TV Aerial



### Product Summary

Indoor directional TV aerial offering slimline benefits.

### Key Features

#### Slimline Design

Occupies minimal space with a depth of just 45mm.

#### Flexible Mounting Options

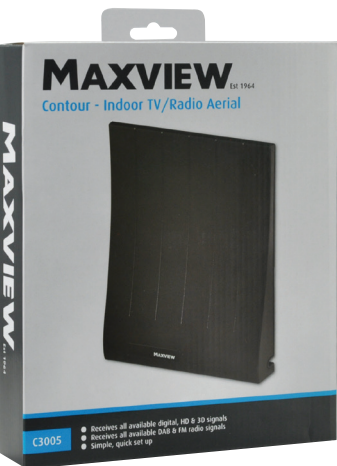
Can be free standing or flush wall mounted with 2m cable offering further flexibility in mounting position.

### Features

- Receives all available digital terrestrial TV signals
- High quality, durable and robust construction
- Unique design
- Designed in the UK

### Specifications

Application: For home and mobile touring applications  
Frequency Range: Wideband for UHF TV  
Compatibility: SD, HD, 3D and 4K TV  
Cable: 2m coaxial  
Power: Passive (no separate power supply required)





## C3010 - Truvision Indoor TV Aerial



### Product Summary

Our most successful indoor TV aerial, is established as a high performing and reliable directional indoor aerial designed to receive horizontal or vertical digital terrestrial TV.

### Key Features

**Integrated Tilt Pivot**  
Allows the aerial to be re-positioned to receive horizontal and vertical signals.

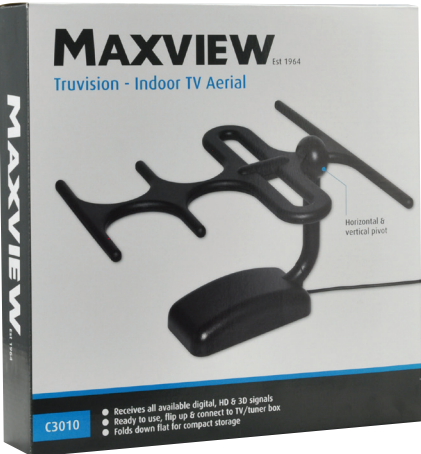
**Base Pivot**  
Allows the aerial to fold flat for compact storage.

### Features

- Receives all available digital terrestrial TV signals
- High quality, durable and robust construction
- Unique design
- Designed in the UK

### Specifications

Application: For home and mobile touring applications  
Frequency Range: Complete wideband for UHF TV  
Compatibility: SD, HD, 3D and 4K TV  
Cable: 2m coaxial  
Power: Passive (no separate power supply required)



## MXR0009 - Loop Indoor TV Aerial



### Product Summary

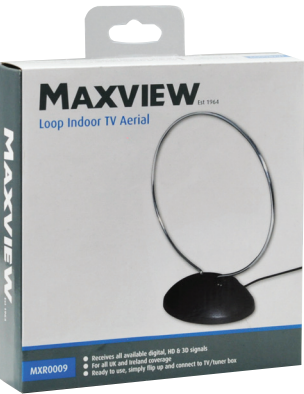
Indoor directional TV aerial. The compact size occupies minimal space, providing a subtle solution where space is limited.

### Features

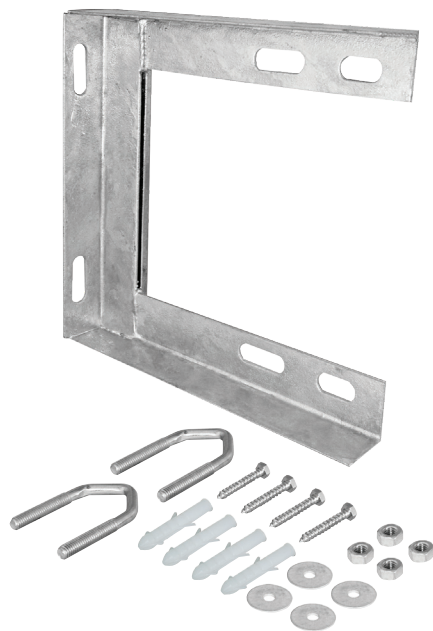
- Receives all available digital terrestrial TV signals
- High quality, durable and robust construction
- Designed in the UK

### Specifications

Application: For home and mobile touring applications  
Frequency Range: Complete wideband for UHF TV  
Compatibility: SD, HD, 3D and 4K TV  
Cable: 1m coaxial  
Power: Passive (no separate power supply required)



## MXR0007 - 9" Wall Fixing Kit



### Product Summary

Mounts a TV/Radio aerial mast securely to an external wall or loft space.

### Features

- High quality, durable and robust construction
- Galvanised steel for corrosion resistance

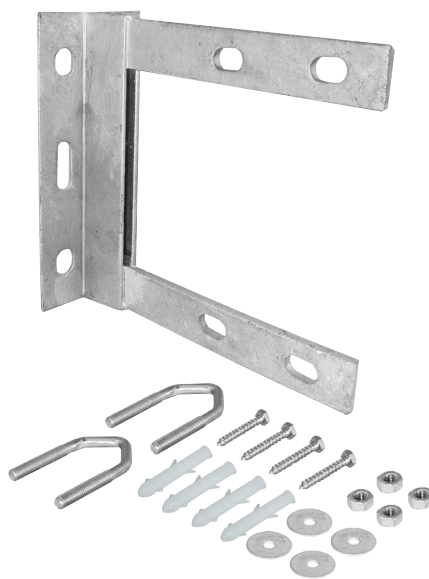
### Specifications

Application:	External wall or internal loft installation
Material:	Heavy duty galvanised steel
Mast Compatibility:	Suitable for up to 2" Ø masts
Dimensions:	H: 288 x D: 288mm (9")

### Product Contents

9" Bracket	Coach Bolts
2 x 2½" V Bolts and Nuts	Washers
Wall Plugs	Instructions

## MXR0008 - 6" Wall Fixing Kit



### Product Summary

Mounts a TV/Radio aerial mast securely to an external wall or loft space.

### Features

- High quality, durable and robust construction
- Galvanised steel for corrosion resistance

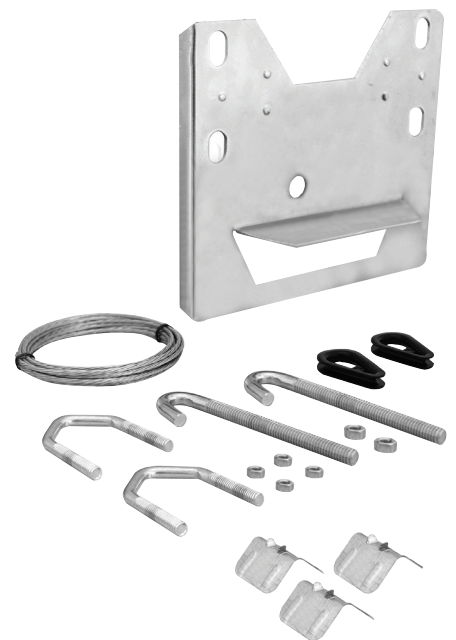
### Specifications

Application:	External wall or internal loft installation
Material:	Heavy duty galvanised steel
Mast Compatibility:	Suitable for up to 1½" Ø masts
Dimensions:	H: 152 x D: 152mm (6")

### Product Contents

6" Bracket	Coach Bolts
2 x 1¾" V Bolts and Nuts	Washers
Wall Plugs	Instructions

## MXR0015 - 6" Chimney Fixing Kit



### Product Summary

Mounts a TV/Radio aerial mast securely to a Chimney Stack.

### Features

- High quality, durable and robust construction
- Corrosion resistant
- For Chimney installations without the need to drill holes

### Specifications

Application:	Chimney installations
Material:	Zinc plated steel
Mast Compatibility:	Suitable for up to 1½" Ø masts
Dimensions:	H: 158mm (6½") x D: 140mm (6¼")

### Product Contents

6" Bracket	5m Lashing Wire
3 x Corner Plates	2 x 1¾" V Bolts and Nuts
2 x j bolts and Nuts	Instructions
2 x Plastic Eyes	





## MXR0013 - Aerial Fixing Kit



### Product Summary

Offers everything you need to mount a TV/Radio aerial in the loft or to an external wall, routing cable to a TV/Radio.

### Features

- Compatible with any rear mounted aerial
- High quality, durable and robust construction
- Designed and manufactured in the UK

### Specifications

Application:	External wall or internal loft installation
Crank Height:	180mm
Clearance (from wall):	310mm
Mast Specification:	1" mast Ø (Aluminium)
Cable Length:	10m Coaxial

### Product Contents

Aluminium Cranked Mast	4 x Raw Plugs
Facia Bracket	2 x 25mm Bolts and Nuts
Coaxial Plug	1 x 35mm Bolt and Nut
10m Coaxial Cable	4 x Screws
8 x 6mm Cable Clips	Instructions



## MXR0016 - Loft Fixing Kit



### Product Summary

Mounts a TV/Radio aerial to a horizontal joist within a loft space.

### Features

- High quality, durable and robust construction
- Designed and manufactured in the UK

### Specifications

Application:	Loft installation
Mast Height:	390mm
Mast Specification:	1" mast Ø (Aluminium)

### Product Contents

Straight Mast
Facia Bracket
Screws
2 x 25mm Bolts & Nuts
Instructions



## E5501/2/3/4 - Aerial Masts



### Models

E5501/Q	3ft x 1" Straight Aluminium Mast
E5501/EQ	3ft x 1" E Crank Aluminium Mast
E5502/Q	5ft x 1" Straight Aluminium Mast
E5503/Q	6ft x 1" Straight Aluminium Mast
E5504/Q	6ft x 1 1/4" Straight Aluminium Mast

### Retail Packaging Type

Poles come complete with hook for planogram displays.

Additional lengths and types available from our trade range (no hooks). Please contact our Customers Services for further details on 01553 813333.

# Signal Boosters

To improve digital TV & radio signal quality in weaker signal areas & distribute incoming signals.

## HGB1-4 - High Gain Signal Boosters



LTE/4G  
COMPATIBLE

### Product Summary

Designed to improve digital TV and FM/DAB radio signal quality in the weakest signal areas.

### Key Features

**1.6m Power Cable**  
Maximises flexibility to suit specific installation applications.

**Surface Mounting**  
Features fixing slots for flat surface mounting.

**LTE/4G Compatible**  
Designed to filter out LTE band to ensure maximum DTT reception in 4G signal areas.

**Switchable Gain Control**  
Can be switched between high and low gain for enhanced signal control.

**Multiple Outputs**  
Available with 1 - 4 outputs, ideal for loft installations near the aerial to distribute signal around the home.

**IR Digi Eye Compatibility**  
(HGB2i only) - Both outputs of the HGB2i can pass voltage to power most IR Digi Eye's.

### Additional Features

- For installation near a TV or in loft space
- High quality, durable and robust constructions
- Ideal for weaker signal areas
- Designed in the UK

### Specifications

Compatibility: Digital TV & FM/DAB radio  
Frequency Range: Wideband for UHF TV & VHF radio  
Power Supply: Mains (230-240V)  
Power Consumption: Low (<5w)  
Fully Screened: Yes

	HGB1	HGB3	HGB4
Outputs:	1	3	4
High Gain (each output):	18dB	13dB	10dB
Switched Low Gain:	6dB	6dB	6dB
Noise:	<4.5dB	<5dB	>5dB

### Product Variants

HGB1 - 1 Output - LTE/4G Compatible  
HGB3 - 3 Outputs - LTE/4G Compatible  
HGB4 - 4 Outputs - LTE/4G Compatible





## PSB1-4 - Plug-In Signal Boosters



**LTE/4G  
COMPATIBLE**

### Product Summary

Designed to improve digital TV and FM/DAB radio signal quality in weaker signal areas with an unobtrusive and discreet installation.

### Key Features

#### Integrated 3 Pin Plug

Plugs directly into a wall socket offering an unobtrusive & discreet installation.

#### LTE/4G Compatible

Designed to filter out LTE band to ensure maximum DTT reception in 4G signal areas.

#### Multiple Outputs

Available with 1-4 outputs, the Plug In Signal Booster will split the signal from one input to multiple outputs (dependant on variant).

### Additional Features

- For installation near a TV or in a loft space
- High quality, durable and robust construction
- Ideal for weaker signal areas
- Designed in the UK

### Specifications

Compatibility: Digital TV & FM/DAB radio  
Frequency Range: Wideband for UHF TV & VHF radio  
Power Supply: Mains (230-240V)  
Power Consumption: Low (<5w)  
Fully Screened: Yes

	PSB1	PSB2	PSB3	PSB4
Outputs:	1	2	3	
Gain (each output):	12.5dB	9.5dB	9.5dB x 1, 6dB x 2	12.5dB
Noise:	3.5dB	3.5dB	3.5dB	3.5dB

### Product Variants

PSB1 - 1 Outputs - LTE/4G Compatible  
PSB2 - 2 Outputs - LTE/4G Compatible  
PSB3 - 3 Outputs - LTE/4G Compatible  
PSB4 - 4 Outputs - LTE/4G Compatible



## PSB6-8 - Distribution Signal Boosters



**LTE/4G  
COMPATIBLE**

### Product Summary

Designed to improve digital TV and FM/DAB radio signal quality in weaker signal areas and distribute incoming signals. Ideal for both home and professional installations where multi-signal feeds are required.

### Key Features

#### 1.6m Power Cable

Maximises flexibility to suit specific installation applications.

#### Multiple Outputs

Available with 6 or 8 outputs, ideal for loft installations near the aerial to distribute signal around the home.

#### Surface Mounting

Features fixing slots for flat surface mounting.

### Additional Features

- For installation near a TV or in a loft space
- High quality, durable and robust construction
- Ideal for weaker signal areas
- Designed in the UK

### Specifications

Compatibility: Digital TV & FM/DAB radio  
Frequency Range: Wideband for UHF TV & VHF radio  
Power Supply: Mains (230-240V)  
Power Consumption: Low (<5w)  
Fully Screened: Yes

	PSB6	PSB8
Outputs:	6	8
Gain (each output):	7.5dB	6dB
Noise:	4.5dB	4.5dB

### Product Variants

PSB6 - 6 Outputs - LTE/4G Compatible  
PSB8 - 8 Outputs

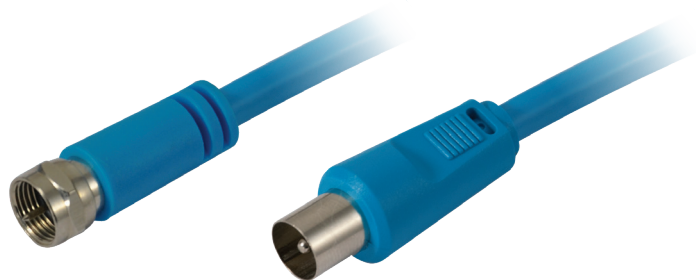


# CONNECTIVITY ACCESSORIES

Offer picture & sound transfer between aerial outlet to TV or Radio equipment.

## MXR0080-87

### Flexible Flyleads - F to F & Coax to Coax



#### Product Summary

Our unique super Flexible Flyleads offer improved cable handling, this makes it less likely to tangle and prevents kinking. Its flexibility makes it easier to route and run through entertainment cabinets and cupboards.

#### Key Features

##### Handling – The Design

Unique cable construction with a multi-stranded copper core & flexible outer jacket significantly reduces the rigidity & stiffness of the cable.

##### Easy Cable Handling – The Result

This construction provides the user with an improved experience in cable handling, use & storage as the cable will no longer maintain its stiff wound shape.

#### Additional Features

- High quality, durable & robust construction
- Designed in the UK

#### Specifications

Connectors: Nickel Plated F-Connectors or Coax (dependant on model)  
Construction: Multi-strand Copper core. UV Stable PVC Outer  
Impedance: 75ohm  
Cable Diameter: 5.6mm

#### Product Variants & Lengths

MXR0080	F to F 1.5m	MXR0084	Coax to Coax 1.5m
MXR0081	F to F 3m	MXR0085	Coax to Coax 3m
MXR0082	F to F 5m	MXR0086	Coax to Coax 5m
MXR0083	F to F 10m	MXR0087	Coax to Coax 10m





# MXR0002/3/36

## HDMI to HDMI Leads - Premium



### Product Summary

HDMI to HDMI Lead combines high definition digital picture and sound into a single cable, providing superior video quality when receiving HD transmissions. Furthermore, the braided fabric finish offers protection against cable damage.

### Features

- High speed with Ethernet
- High quality with enhanced screened cable
- Flexible stranded outer casing prevents cable damage & makes installation easy
- High performance injection moulded connectors with gold plated HDMI contacts
- Gold plated connectors for optimum signal transfer
- Multi stranded high purity copper centre conductor ensures maximum signal strength for crystal clear picture & vibrant natural colour
- Four layer shielded design offers superior protection against EM & RF interference for distortion free & picture sound

### Compatibility

Supports: 3D enabled and 4K ultra HD 2160p resolution at up to 30FPS. Audio Return Channel (ARC) and Ethernet Channel (HEC).  
Connects: Blu-ray players, Apple TV, PS4, PS3, Xbox One, Xbox 360, computers & other HDMI-enabled devices to TVs, displays, A/V receivers & more.

### Specifications

HDMI Ethernet Channel:	Transfer speeds up to 100Mbps	Connectors:	Male to Male HDMI
Resolution:	Supports up to 4k x 2k (Up to 4 times the resolution of 1080p 4096 x 2160 @ 24Hz)	Construction:	Multi-strand Copper core
		Version:	V1.4
		Bandwidth:	Up to 10.2Gbps

### Product Variants & Lengths

MXR0002	0.8m
MXR0003	1.5m
MXR0036	3m

# MXR0055

## HDMI Pivot Adaptor



### Product Summary

Allows HDMI connections to be made for TV's with side ports or where space is limited.

### Features

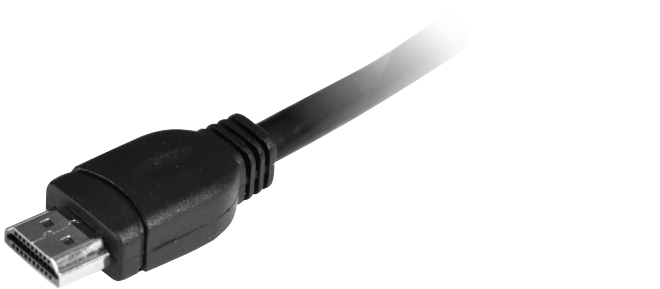
- Ideal for TV's with side ports or wall mounted TV applications
- High quality, durable & robust construction
- Premium gold plated contacts improve picture & sound quality

### Specifications

Compatibility: SD, HD, 3D & 4K TV  
Connector: Gold Plated HDMI Male to HDMI Female Connector

# MXR0005/35

## HDMI to HDMI Leads



### Product Summary

HDMI to HDMI Lead combines high definition digital picture and sound into a single cable, providing excellent video quality when receiving HD transmissions.

### Features

- High speed with Ethernet
- Flexible heavy duty outer casing prevents cable damage
- High performance injection moulded connectors

### Compatibility

Supports: 3D enabled and 4K ultra HD 2160p resolution at up to 30FPS. Audio Return Channel (ARC) and Ethernet Channel (HEC).  
Connects: Blu-ray players, Apple TV, PS4, PS3, Xbox One, Xbox 360, computers & other HDMI-enabled devices to TVs, displays, A/V receivers & more.

### Specifications

HDMI Ethernet Channel:	Transfer speeds up to 100Mbps	Connectors:	Male to Male HDMI
Resolution:	Supports up to 4k x 2k (Up to 4 times the resolution of 1080p 4096 x 2160 @ 24Hz)	Construction:	Multi-strand Copper core
		Version:	V1.4
		Bandwidth:	Up to 10.2Gbps

### Product Variants & Lengths

MXR0005	1m
MXR0035	1.8m

# MXR0056

## HDMI Angled Adaptor



### Product Summary

Ideal for hard to reach areas, taking the strain from the cable ensuring a secure connection.

### Features

- Ideal for TV's with side ports or wall mounted TV applications
- High quality, durable & robust construction
- Premium gold plated contacts improve picture & sound quality

### Specifications

Compatibility: SD, HD, 3D & 4K TV  
Connector: Gold Plated HDMI Male to HDMI Female Connector

## H87020/40/100 Coax to Coax Flyleads - Premium



### Product Summary

Offer picture and sound transfer between aerial outlet to TV or Radio equipment. With gold plated contacts offer improved picture and sound transfer between aerial outlet to TV or Radio equipment.

### Key Features

- Enhanced screening
- High quality, durable & robust construction
- Moulded connectors

### Specifications

Connectors: Gold plated male coax connectors  
Construction: Multi-strand Copper core  
Impedance: 75ohm  
Cable Diameter: 5mm

### Product Variants & Lengths

H87020 2m  
H87040 4m  
H87100 10m



## H84021/22/25 Coax to Coax Flyleads



### Product Summary

Offer picture and sound transfer between aerial outlet to TV or Radio equipment.

### Features

- Enhanced screening
- High quality, durable & robust construction
- Moulded connectors

### Specifications

Connectors: Nickel plated Male Coax Connectors  
Construction: Multi-strand Copper core  
Impedance: 75ohm  
Cable Diameter: 5mm

### Product Variants & Lengths

H84021 2m  
H84022 4m  
H84025 10m



## MXR0061 Coax to Angled Coax Flylead



### Product Summary

Offer picture and sound transfer between aerial outlet to TV or Radio equipment. The right angled connector makes it easier for flat screen wall mounted applications or where cables are visible for a neat installation.

### Features

- Enhanced screening
- High quality, durable & robust construction
- Moulded connectors

### Specifications

Connectors: Nickel plated Male Coax Connectors  
Construction: Multi-strand Copper core  
Impedance: 75ohm  
Cable Diameter: 4.6mm

### Product Variant & Length

MXR0061 2m





# H84035/39/40/71

## F to F Flyleads



### Product Summary

Offer picture and sound transfer between Satellite/Cable equipment

### Features

- High quality, durable and robust construction
- Moulded connectors

### Specifications

Connectors:	Nickel plated Male F Connectors
Construction:	Multi-strand Copper core
Impedance:	75ohm
Cable Diameter:	5mm

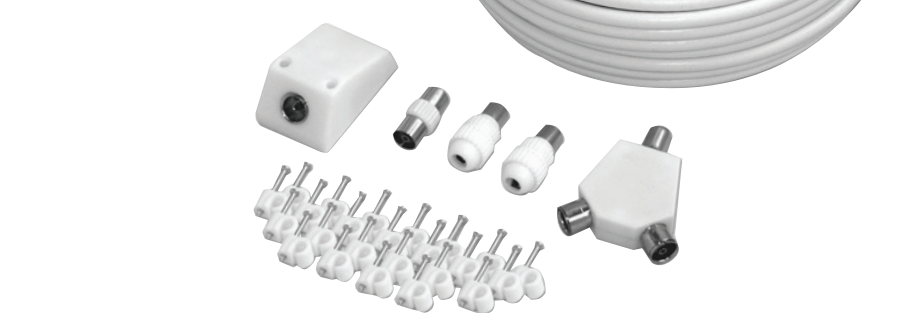
### Product Variants & Lengths

H84035	1m
H84039	2m
H84040	4m
H84071	10m



# F6215/25

## TV/Radio Cable Kits



### Product Summary

Offers 15m or 25m of cable to connect and route an external or internal TV/Radio aerial.

### Features

- 2 Way 'Y' Splitter which can link up to 2 TV's if required
- High quality cable with enhanced screening
- Cable Outlet Box for discrete routing

### Specifications

Cable Lengths:	15 or 25m
Cable Diameter:	6mm
Impedance:	75ohm
Braid:	Aluminium
Core:	Copper coated Aluminium
Shield:	Aluminium

### Kit Contents

15 or 25m Coaxial Cable (depending on variant)
1 x Surface Coaxial Outlet Box
1 x Back to Back Coaxial Connector
15 or 25 x 6mm Cable Clips (depending on variant)
2 x Coaxial Plugs
Y Splitter
Instructions

### Product Variants & Lengths

F6215	15m
F6225	25m



# TV & Radio 'Y' Splitters

Allows an aerial down lead to be distributed to 2 or 3 TV's or to split DAB/FM radio signals.

## H84006 3 Way 'Y' Splitter - Premium



### Features

- Durable, premium gold plated contacts for improved picture & sound transfer with increased corrosion resistance
- High quality, durable and robust construction
- Injection moulded design provides strong, robust protection of the internal components

### Specifications

Connectors: Gold Plated Male to Female

## MXR0075 2 Way Angled 'Y' Splitter - Premium



### Features

- Durable, premium gold plated contacts for improved picture & sound transfer with increased corrosion resistance
- Injection moulded design provides strong, robust protection of the internal components
- High quality, durable and robust construction
- Allows a tight right angled coaxial connection to be made where space is limited

### Specifications

Connectors: Gold Plated Male to Female

## MXR0042 2 Way 'Y' Splitter - Premium



### Features

- Durable, premium gold plated contacts for improved picture & sound transfer with increased corrosion resistance
- High quality, durable and robust construction
- Injection moulded design provides strong, robust protection of the internal components

### Specifications

Connectors: Gold Plated Male to Female

## H84004 2 Way Coax 'Y' Splitter



### Features

- High quality, durable & robust construction

### Specifications

Connectors: Nickel Male to Female

# Angled Connectors

Allow connections to be made where space is limited. The 90° angle is ideal for hard to reach areas, taking the strain from the cable ensuring a secure connection. Perfect for TV wall mount application.

## MXR0072 Angled Coax Connector



### Features

- High quality, durable & robust construction
- Allows a tight right angled coax connection
- Injection moulded design provides strong, robust protection of the internal components

### Specifications

Compatibility: SD, HD, 3D & 4K TV  
Connector: Male to Female Coax to Coax Connector

## MXR0073 Angled 'F' Connector



### Features

- High quality, durable & robust construction
- Allows a tight right angled F connection
- Premium gold plated contacts improve picture & sound quality
- Injection moulded design provides strong, robust protection of the internal components

### Specifications

Compatibility: SD, HD, 3D & 4K TV  
Connector: Male to Female F to F Connector

## MXR0074 Angled 'F' Connector



### Features

- High quality, durable & robust construction
- Allows a tight right angled F connection
- Injection moulded design provides strong, robust protection of the internal components

### Specifications

Compatibility: SD, HD, 3D & 4K TV  
Connector: Male to Female F to F Connector



# Plugs, Connectors, Sockets & Adaptors

All with high quality, durable & robust construction.

## H84012 Coax Plastic Plugs



### Product Summary

High quality coax plugs for terminating coaxial cables, enabling cable length to be customised. Suitable for coaxial cable up to 6mm diameter.

## H84011 Coax Plugs



### Product Summary

High quality coax plugs for terminating coaxial cables, enabling cable length to be customised. Suitable for coaxial cable up to 7mm diameter.

## H84081 Coax Sockets



### Product Summary

Suitable for applications requiring a female connection. Suitable for coaxial cable up to 7mm diameter.

## H87009 Fast Fit Coax Plugs



### Product Summary

Unique design offers a quick & easy installation without having to disassemble the plug. Suitable for coaxial cable up to 7mm diameter.

## MXR0017 Back to Back Coax Connector - Premium



### Product Summary

For connecting or extending coaxial leads. With gold plated contacts to improve picture & sound quality.

## H84013 Back to Back Coax Connectors



### Product Summary

For connecting or extending male coax leads.

## H84065 Back to Back F Connector



### Product Summary

For connecting or extending coax leads with F plug connections.

## MXR0041 Push Fit F Connectors



### Product Summary

Screws on to existing F Connector to make a simple push on connection.

## H84077 F Connectors



### Product Summary

Designed to suit a variety of different Satellite & TV applications requiring a male F connection. Suitable for cable up to 7mm diameter.

## H84034 F to Coax Adaptors



### Product Summary

Easily converts a coax connection into an F connection.

## H84038 Satellite Cable Connecting Kit



### Product Summary

Contains two F connectors & a back to back connector to extend or join cables. Suitable for cable up to 7mm diameter.

## H84026 Coax Cable Connecting Kit



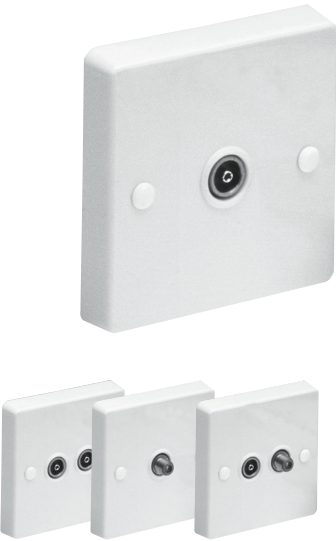
### Product Summary

Contains two coaxial plugs and a back to back coaxial connector to extend or join coaxial cables. Suitable for cable up to 6mm diameter.



# TV Aerial Outlet Plates & Boxes

## H87001/02/03/04 Screened Outlet Plates



### Product Summary

Professional Screened Outlet Plates are designed to neatly install down leads into a convenient position offering an unobtrusive installation.

### Features

- Fully screened to maintain maximum signal quality & shield the connection from any electronic interference
- Quick and Easy Installation - Saddle & Clamp style inputs to coaxial or F outputs
- High quality, durable and robust construction
- Flush fit for neat installation
- Designed in the UK

### Specifications

Compatibility: Satellite, TV & Radio (dependant on variant)  
Cable Requirements: Cable sizes up to 7.5mm  
Pattress Requirements: Compatible with most depths of pattress boxes

### Product Variants

H87001 Single TV/Radio Coaxial Outlet Plate  
H87002 Twin TV/Radio Coaxial Outlet Plate  
H87003 Single Satellite Outlet Plate  
H87004 Twin TV/Radio & Satellite Outlet Plat

## H84041/42/07 Outlet Plates



### Product Summary

Outlet Plates are designed to neatly install down leads into a convenient position offering an unobtrusive installation.

### Features

- Flush fit for neat installation
- High quality, durable & robust construction

### Specifications

Compatibility: Satellite, TV & Radio (dependant on variant)  
Cable Requirements: Cable sizes up to 7.5mm  
Pattress Requirements: Compatible with most depths of pattress boxes

### Product Variants

H84041 Single TV/Radio Coaxial Outlet Plate  
H84042 Twin TV/Radio Coaxial Outlet Plate  
H84007 Single Satellite Outlet Plate

## H84001/02 Outlet Boxes



### Product Summary

Outlet Boxes are designed to neatly install down leads into a convenient position offering an unobtrusive installation.

### Features

- Surface mounted for discrete installation
- High quality, durable & robust construction

### Specifications

Compatibility: TV & Radio  
Cable Requirements: Cable sizes up to 7.5mm  
Input: Screw Termination  
Output: Coaxial

### Product Variants

H84001 Single TV/Radio Coaxial Outlet Plate  
H84002 Twin TV/Radio Coaxial Outlet Plate





All mounts come in eye catching, informative, quality retail packaging.

## **'Reliable performance, delivered with style'**

OMP represents high quality TV wall mounts with high performance, integrating unique features with attention to detail to ensure simple installation & use, delivered with style.

OMP wall mounts offer a range of designs including fixed, tilt & cantilever brackets to suit all environments from professional & corporate installations through to home & leisure.

Ask your Maxview representative for more details  
or visit [www.ompglobal.co.uk](http://www.ompglobal.co.uk)





## Did you know...

We also design & manufacture products for the leisure & trade markets.  
Visit our website for full details.

# MAXVIEW

Visit us at [www.maxview.co.uk](http://www.maxview.co.uk)

#### Sales Contacts

Tel: +44 (0) 1553 813333  
Email: [sales@maxview.co.uk](mailto:sales@maxview.co.uk)

#### Support Contacts

Helpline: +44 (0) 1553 811000  
Email: [support@maxview.co.uk](mailto:support@maxview.co.uk)

#### Address

Maxview Ltd, Common Lane, Setchey,  
King's Lynn, Norfolk, PE33 0AT, England.



Search for us 'Maxview limited'