

Unimax Mast Installation and user guide

B2009

Safety instructions

- > Always follow manufacturer's operating and safety instructions when using tools and/or equipment
- > Always remove your aerial and mast before travelling
- > Maxview shall not be liable for any damages or injury resulting from improper usage or installation

Guidelines for the best reception

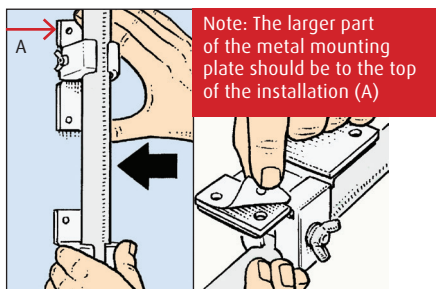
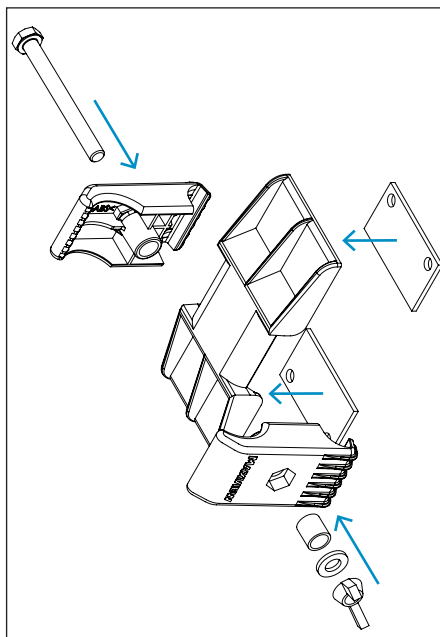
- > Choose the site position where the aerial can be mounted as high as possible with a clear line of sight pointing in the direction of the transmitter with no obstructions e.g trees, buildings blocking view.
- > TV reception may improve with height and the fewer obstructions between the aerial and the transmitter the better.

Installation example

Turn over for clamp and mast assembly.



Unimax Clamp assembly
Rotate this sheet to view drawing



Mounting

Please refer to the application photo on the reverse for recommended position of the clamp.

Option 1 with self adhesive pads (included)

Clean the area well before fixing and ensure surface is completely dry.

1. Peel off backing tape and apply pads to fixing plates.
2. Peel off the other side of the backing tape.
3. Place clamp assembly to your chosen location, making certain the mast is in a true vertical position and the aerial is clear of the roof.
4. Press brackets firmly to achieve good contact (to ensure permanent fixing this should be left for 24 hours).

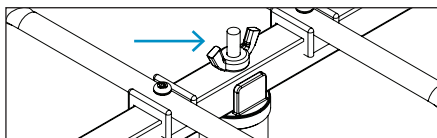
Option 2 flexible adhesive

We recommend Sikaflex-512 Caravan. Refer to manufacturer's guidelines for installation.

Option 3 screw mounting

In addition to the self adhesive pads you can use self tapping screws (not supplied). Recommend screws: No 6 x ½" or 3.5mm x 12mm (4 qty).

Connecting aerial to the mast



UK Contact:

Helpline: +44 (0)1553 811000
Email: support@maxview.co.uk
Web: www.maxview.co.uk

Rate and Like us on Facebook:

Search: 'Maxviewlimited' today.

