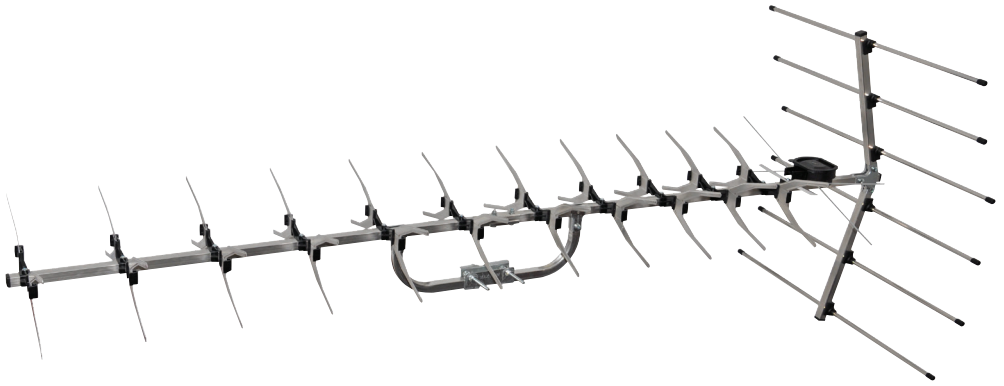


MAXVIEW Est 1964

Please note - You will require Coaxial Cable to complete the assembly

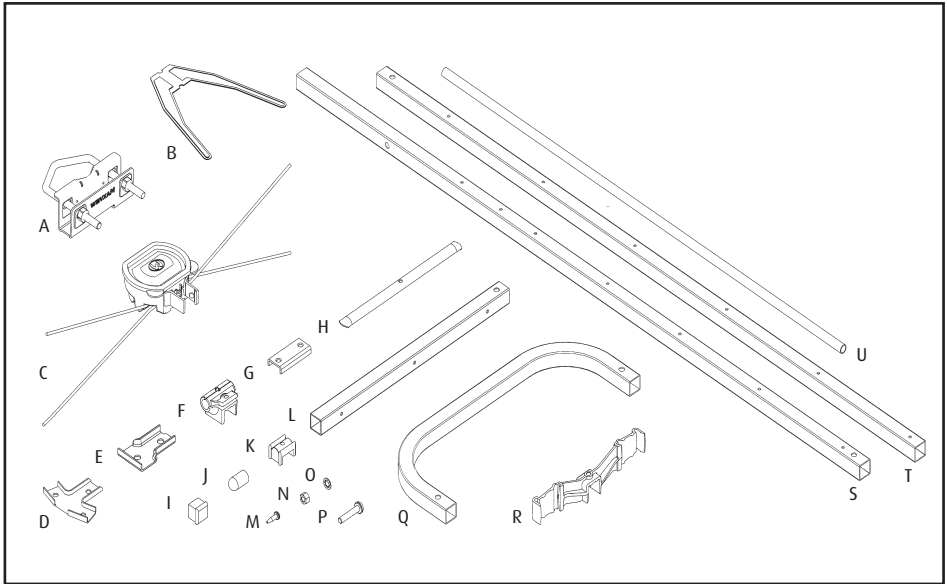


MXR0025 High Gain TV Aerial - 50 Element Assembly instructions

Contact:

Helpline: +44 (0)1553 811000
Email: support@maxview.co.uk
Web: www.maxview.co.uk

Maxview reserve the right to change specifications without prior notice
9111302 Iss 2



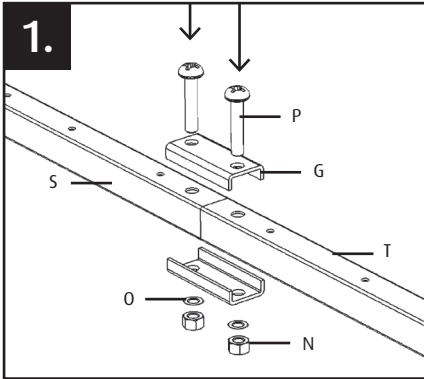
Kit contents check list

- | | | |
|----------------------------|------------------------|------------------------|
| A. Mast Clamp 1 | H. Element x 1 | O. Washer x 7 |
| B. Foil 'V' Element x 22 | I. End Bung x 4 | P. M5 x 25mm Screw x 7 |
| C. Dipole x 1 | J. Reflector Bung x 12 | Q. Support Arm x 7 |
| D. Reflector Bracket x 2 | K. Saddle Clip x 1 | R. Element Clip x 11 |
| E. Support Arm Bracket x 4 | L. Reflector Boom x 2 | S. Rear Boom x 1 |
| F. Reflector Rod Clip x 6 | M. Screw x 19 | T. Front Boom x 1 |
| G. Joining Plate x 2 | N. Nut x 7 | U. Reflector Rod x 6 |

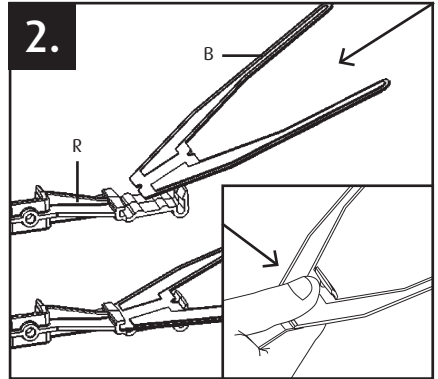
Safety precautions

- > Ladder safety - always read and follow the manufacturer's instruction label affixed to the ladder
- > When working on installations outside, beware of overhead power lines
- > Observe safe working practices, tread carefully and ensure adequate lighting is available in loft or roof space
- > To avoid injury always route cables or wiring carefully
- > Always follow manufacturer's operating and safety instructions before using tools and/or equipment
- > Before starting installation check structure is sound and check for hidden electrical wiring or plumbing
- > If in doubt consult a qualified electrician or professional aerial installer

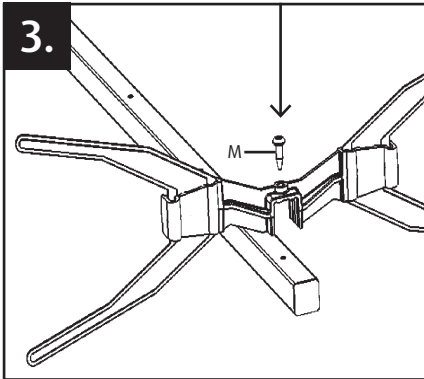
Aerial Assembly Instructions



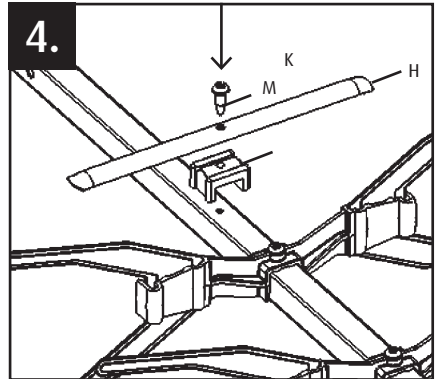
Join the 2 pieces of Boom together using the Joining Plate and Screws.



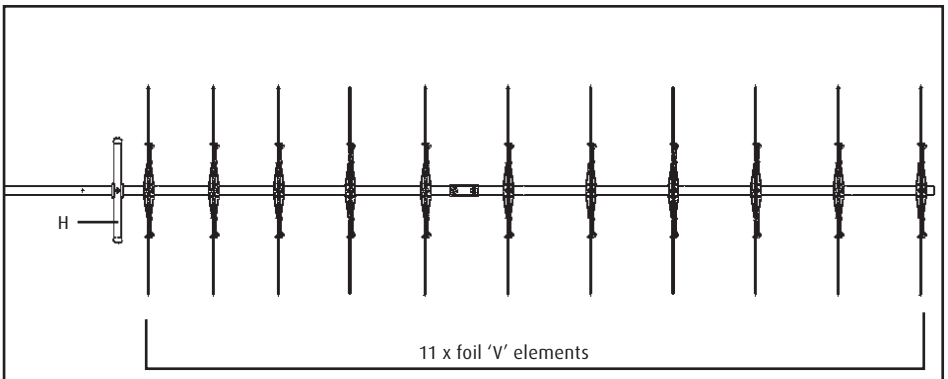
Snap all Foil 'V' Elements into 11 Element Clips using your thumb.



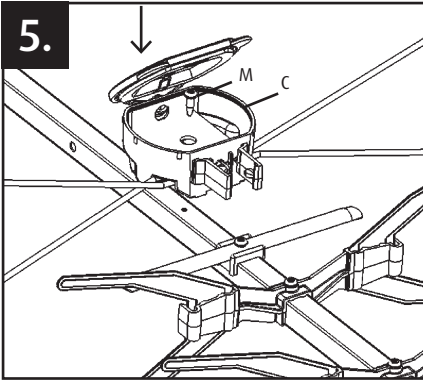
Screw the 11 sets of Foil 'V' Elements to the Boom.



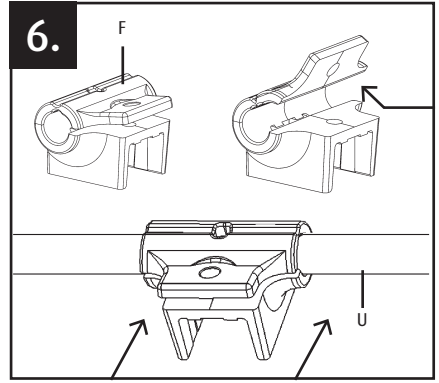
Screw the Element to the Boom.



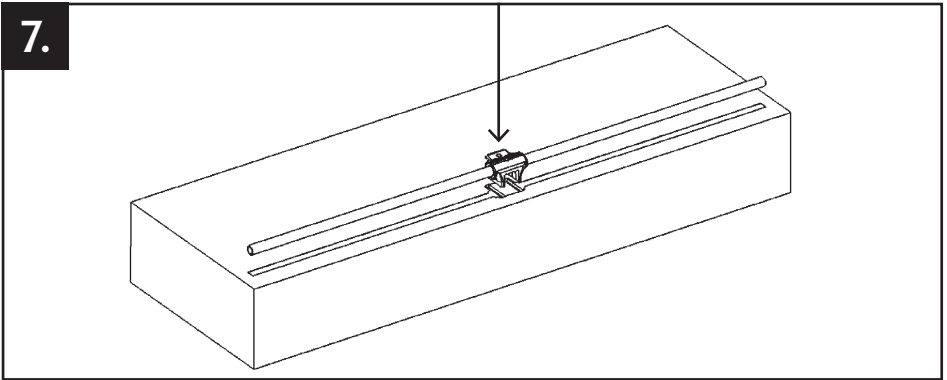
Element reference guide.



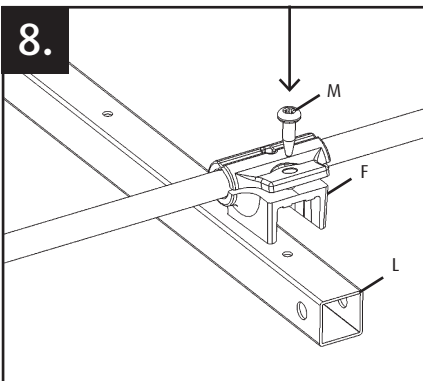
Screw the Dipole to the Boom.



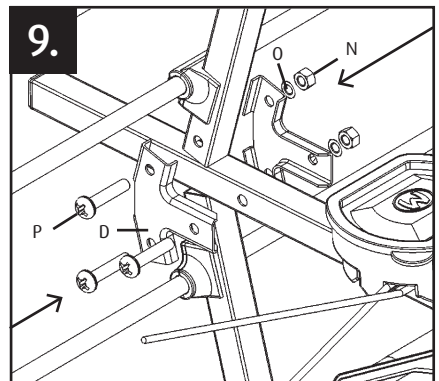
Prise open clip using a screwdriver or by hand. Firmly insert Rod into Clip cavity and close.



Use the template on the back of the box as a guide to centre the Clips onto the Rod. Simply slide Clip along Rod to adjust.

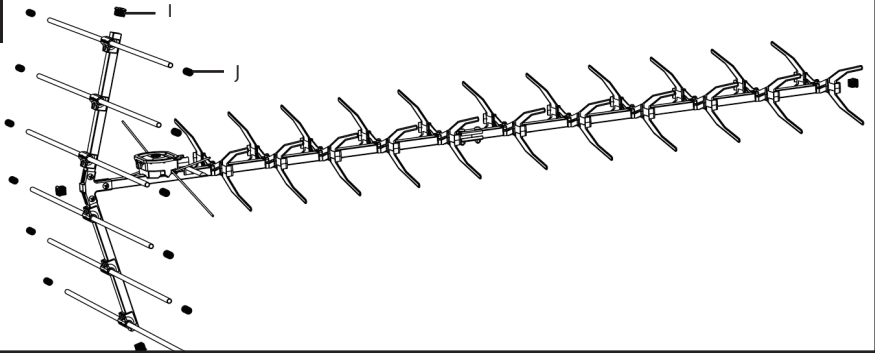


Screw the Reflector Rods onto the Reflector Boom.



Secure the Reflectors to the Aerial Boom using the Reflector Brackets.

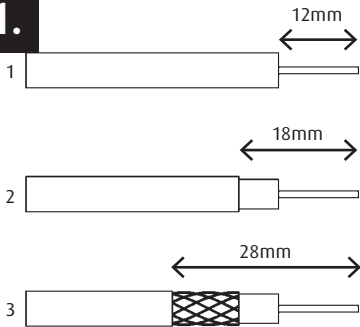
10.



Place the Bungs on the Rods and Boom.

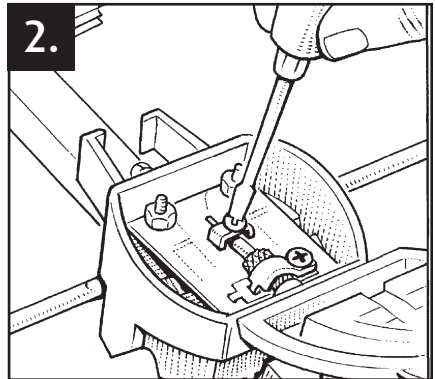
Connecting Coaxial Cable (Not supplied)

1.



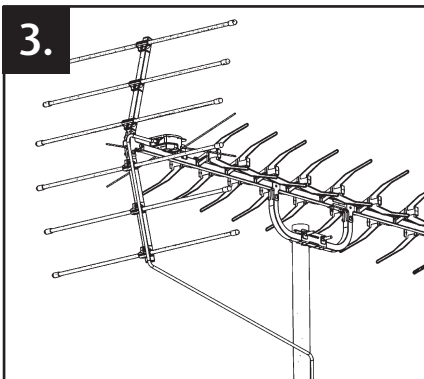
Using a sharp knife prepare the Coaxial Cable** as shown.

2.



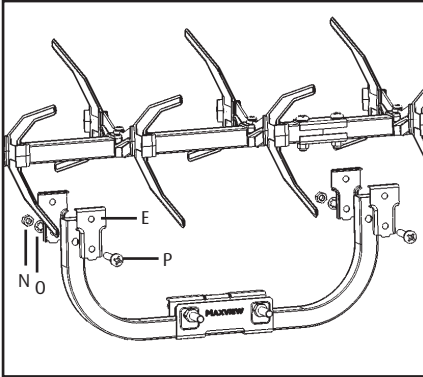
Loosen the screws on the two terminals. Thread Coaxial Cable through Dipole. Ensure outer braid does not touch inner core. Tighten screws and Dipole lid.

3.



Ensure cable routed as shown for maximum performance.

Mast Clamp Assembly



* Coaxial Cable Kit

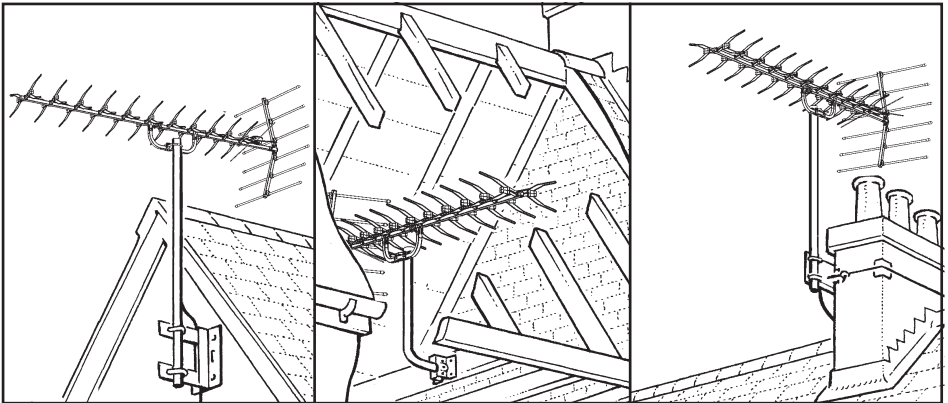
**Wall, Loft or Chimney TV Aerial Fixing Kit

Available from Maxview. Contact our Customer Service (01553 811000) for your nearest retail outlet or order online at www.maxview.co.uk

Attach aerial to a suitable aerial mast** (not supplied) using the supplied Fixing Bracket.

Typical Aerial Mounting Application Examples

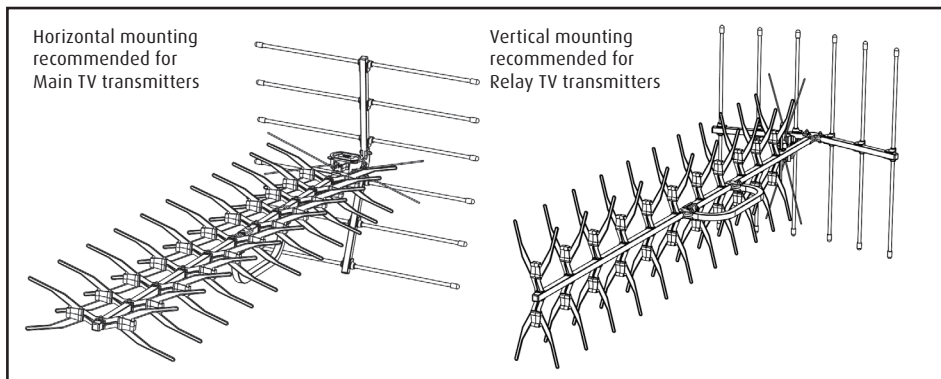
Wall, loft and chimney fixing kits are available from Maxview



You should mount your aerial as high as possible on either a chimney, on an external wall, or in the loft. Remember that in general, TV pictures improve with height and the less obstructions between the aerial and the transmitter the better.

Now point your aerial in the direction of the transmitter by looking at neighbours aerials and copying the direction they are pointing. If you decide to fit the aerial in your loft, special care should be taken when walking in the roof space.

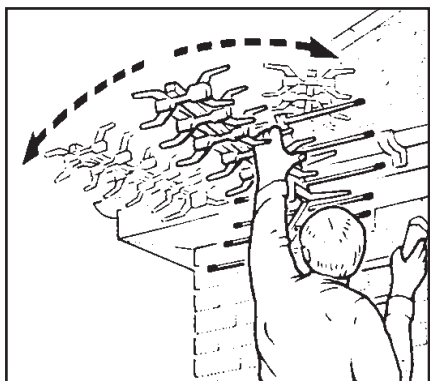
Polarisation



Tip:

Look at outdoor aerials in your area to see which direction to point your aerial for best reception.

Aligning your aerial



Turn on your TV set. Refer to manufacturers instructions to tune your TV into the available digital/HD/3D channels. Select a tuned in channel. Next, carry out the following procedures:

1. Turn your aerial to the LEFT until you lose the picture (if alone turn the volume up and turn until you hear a reduction in sound quality).
2. Remember this position and turn your aerial to the RIGHT until you lose the picture/sound again.
3. Now point the aerial in the centre of these two points and you will receive optimum reception.

Need a boost?



If you are struggling to receive some of the digital terrestrial channels clearly or are experiencing picture break up on your TV, this may be due to being in a very poor signal area and a signal booster may be required.

When connected between your aerial and TV/Set top box, a booster will amplify the signal being received from your closest TV transmitter.

The now amplified signal should then give you more chance of receiving a clearer, stronger and more stable picture.

Visit our website www.maxview.co.uk for our full range of digital signal boosters.

