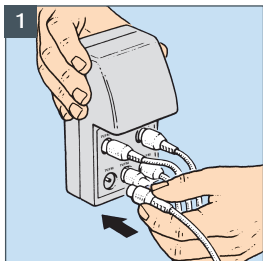
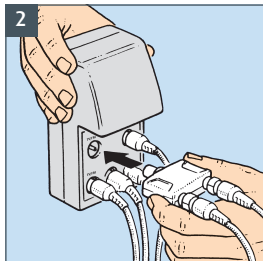


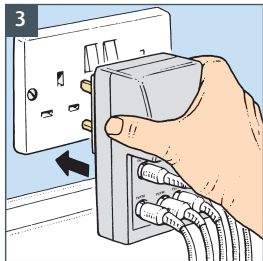
### Installation Instructions:



Connect the coaxial lead from your TV or Radio and aerial down lead (single or diplexed) into the front section of the booster.



To split the signal from the output a TV/Radio Diplexer and Flylead will be required (not supplied).



Plug the booster into a convenient 3 pin mains socket and switch on.

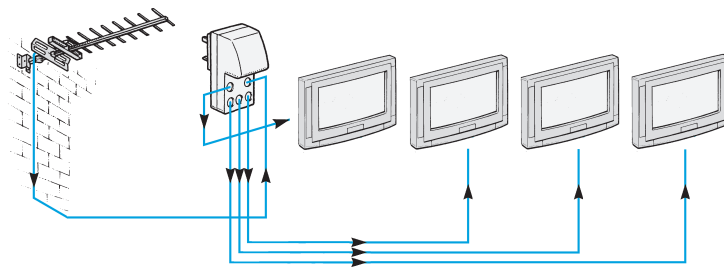
### Safety Warnings:

- > Always follow manufacturer's operating and safety instructions when using tools and/or equipment
- > To avoid injury always route cables carefully
- > Before making any connections switch electricity off at the mains
- > If in doubt consult a qualified electrician or professional aerial installer

FOLD LINES

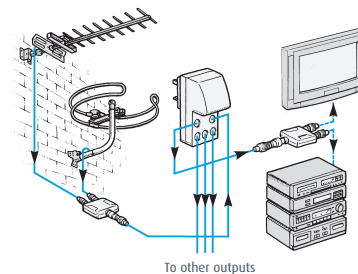
### Typical Application Example:

This Booster will supply up to 4 TV's.



TV and FM/DAB radio.

A diplexer can be used on input and outputs.



### Additional Features:

- High quality durable construction
- Designed in the UK
- 1 year guarantee

### Specifications:

Frequency Range: Wideband for UHF TV and VHF radio (40-790MHz)  
Power Supply: Mains (230-240V)  
Power Consumption: Low (<5w)  
Fully Screened: Yes  
Outputs: 4  
Gain (each output): 12.5dB  
Noise: 3.5dB  
Designed for continuous indoor use.

Application and user instructions inside

PSB48NS IS: 1

FRONT PANEL - SHOWN IN PACKAGING